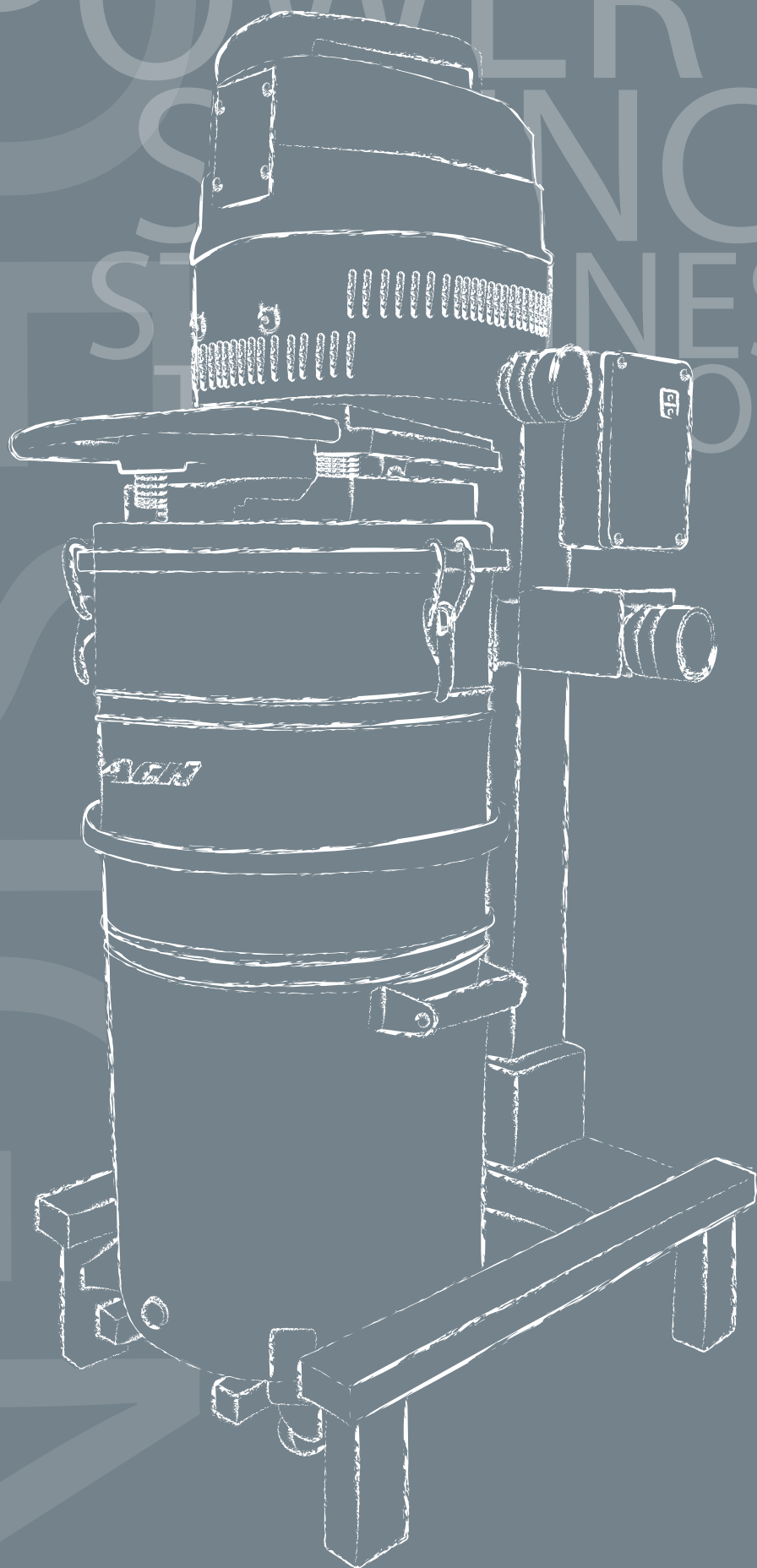


User Guide

english

Central Vacuum
Systems

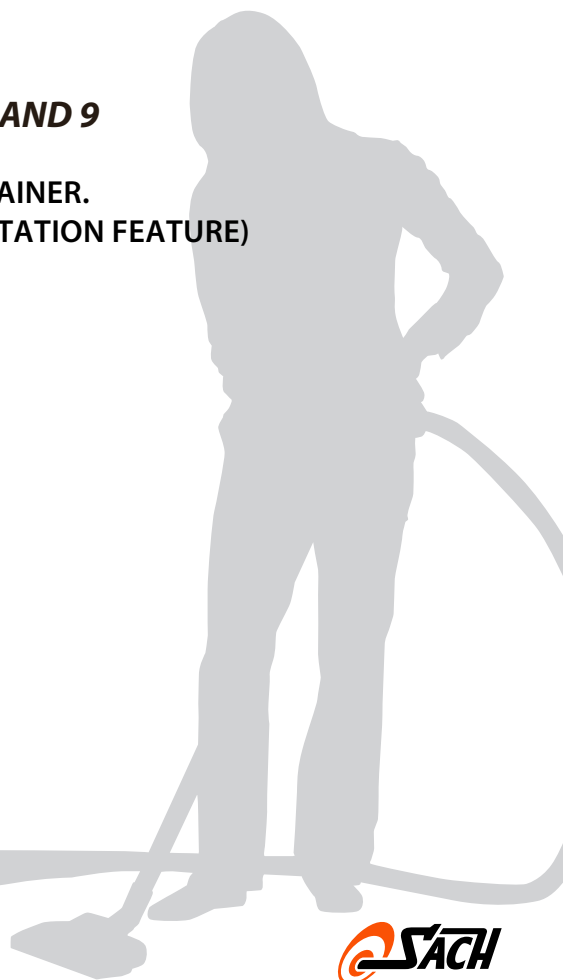
EVOBLOCK
3.0-5.5kW ELECT. C.



INDEX

EVOBLOCK USER GUIDE

1. INTRODUCTION. *PAGE 1*
2. GUARANTEE. *PAGE 1*
3. DESCRIPTION OF THE CENTRAL VACUUM UNIT. *PAGE 2*
4. USAGE RESTRICTIONS. *PAGE 2*
5. SAFETY GUIDELINES. *PAGE 2*
6. CENTRAL VACUUM TECHNICAL DETAILS. *PAGE 3*
7. INSTALLATION. *PAGE 4*
8. USE OF THE CENTRAL VACUUM. *PAGES 5 AND 6*
 - 8.1 SWITCHING THE CENTRAL VACUUM UNIT ON AND OFF
 - 8.2 STARTING THE CENTRAL VACUUM
9. ELECTRICAL CONNECTIONS. *PAGE 6*
10. MAINTAINING THE CENTRAL VACUUM UNIT. *PAGES 7, 8 AND 9*
 - 10.1. EMPTYING THE DUST CONTAINER.
 - 10.2. INSTALLATION OF A BAG INSIDE OF A DUST CONTAINER.
 - 10.3. THE FILTER'S SELF-CLEANING SYSTEM (FILTER AGITATION FEATURE)
 - 10.4. REPLACING THE FILTER
 - 10.5. PERIODIC MAINTENANCE
11. TECHNICAL DATA. *PAGE 9*
12. EEC CONFORMITY. *PAGE 10*



1. INTRODUCTION

This user and maintenance manual is designed to provide basic guidelines and recommendations to ensure:

- The safety of users.
- The correct functioning of the central vacuum.
- The optimisation of performance.

Persons authorized to operate the central vacuum unit should read and understand this manual before switching it on.

RECOMMENDATIONS REGARDING THE MANUAL:

- Always keep this instruction manual handy.
- Keep the manual in a dry place to ensure it remains legible.
- In the event of loss or damage request a replacement from the manufacturer / supplier.
- If the central vacuum unit is being sold on to a third party, ensure the user manual is provided or familiarize the installer with the key aspects of the system.

SACH RESERVES THE RIGHT TO MODIFY THIS MANUAL WITHOUT PRIOR NOTICE.

2. GUARANTEE

SACH provides a guarantee solely and exclusively to the end user. The period covered by this guarantee is 12 months from the date of installation, which will appear on the guarantee registration card provided to the user. This card must include all contact details of the user and must be returned within 15 days of the installation date.

In the event that the registration card is not received by SACH, it will be guided by the unit's manufacturing date, SACH's responsibility being consequently limited to the repair of the unit, being relieved of all liability for damage to objects, persons or third parties.

The customer is responsible for the correct installation of the central vacuum unit and its correct use, the guarantee covering any fault to central vacuum unit which is not caused by inappropriate usage or negligent handling.

SACH reserves the right to cancel the validity of this guarantee in the following cases:

- Where the central vacuum unit is handled by people other than our authorized technical assistance centres or in the event that non-original spare parts or accessories have been fitted.
- Improper use of the machine as detailed in this manual.
- Incorrect electrical installation.
- Non-compliance with safety norms applying in the country where the machine is operated.
- Inadequate maintenance.
- Where the machine has not undergone periodic maintenance checks as laid down in the manual.
- Partial or total failure to follow the guidelines and recommendations laid down in this manual.

3. DESCRIPTION OF THE CENTRAL VACUUM UNIT

The central vacuum unit you have bought is designed to vacuum up dust in work-places such as offices, stores, businesses etc. Its usage may be occasional or continuous or of an extended duration.

The particles vacuumed up by the flexible hose are exposed to the cyclonic effect of the central vacuums dust container, heavier particles being separated out to land in the bottom of the container whilst lighter particles are drawn towards the primary filter cartridge where they are captured.

The following paragraphs detail the working of the central vacuum unit:

- Dust inlet.
- Agitation of the filter to clean it.
- Emptying the main dust container.
- Filling and emptying the filter compartment.

4. USAGE RESTRICTIONS

- Do not vacuum up cigarettes that are still lit or other potentially flammable substances.
- Do not vacuum up substances which can cause an explosion when exposed to air.
- Do not operate the system in atmosphere where potentially explosive gases or vapours from toxic chemicals are present.
- Do not vacuum up toxic substances without having first verified the suitability of filters and cartridges for this.
- Do not touch the central vacuums electrical parts without having first unplugged the power cable from the socket.
- Under no circumstances should you modify the central vacuum unit.
- This central vacuum must be used in accordance with the instructions laid down in this manual. Any other use is deemed to be inappropriate and dangerous.

5. SAFETY GUIDELINES

READ THE MANUAL CAREFULLY BEFORE SWITCHING THE CENTRAL VACUUM UNIT ON OR OPERATING IT.

- Do not switch the central vacuum on if you sense that something is not right with it.
- Check that the switch is not defective.
- Wear appropriate protective clothing.
- Take care to stay well clear of the suction inlet of the central vacuum unit whilst wearing loose-fitting clothing or items which might easily be sucked into the system.
- Make sure that the filters are correctly located and working efficiently.
- When operating the central vacuum unit or carrying out maintenance always observe the safety guidelines which apply to your workplace.
- Do not carry out repairs without authorization from the manufacturer.
- For normal cleaning DO NOT use petrol or solvent.
- To move the central vacuum unit use the handle located on the motor housing. Under no circumstances pull the unit by the power cable or the flexible hose.
- Never point the inlet or vacuum hose at persons or animals.
- Ensure that the central vacuum unit is protected from the elements.
- Ensure that the power supply of the socket to which the central vacuum unit is connected corresponds to that which is showing on the units' serial number plate.
- Verify that the power supply cable is neither damaged nor cut. Should you need to replace the power cable ensure that the replacement has the same technical characteristics as the original. Unapproved cables or cables which are smaller in section can overheat and be dangerous for the user.
- Make sure that the electrical system to which the central vacuum unit is connected is working efficiently (verify the presence of an efficient grounding).
- All maintenance work must be carried out by authorised personnel with the central vacuum switched off and unplugged.
- Before switching the central vacuum unit on verify that the safety devices are functioning correctly

6. CENTRAL VACUUM TECHNICAL DETAILS

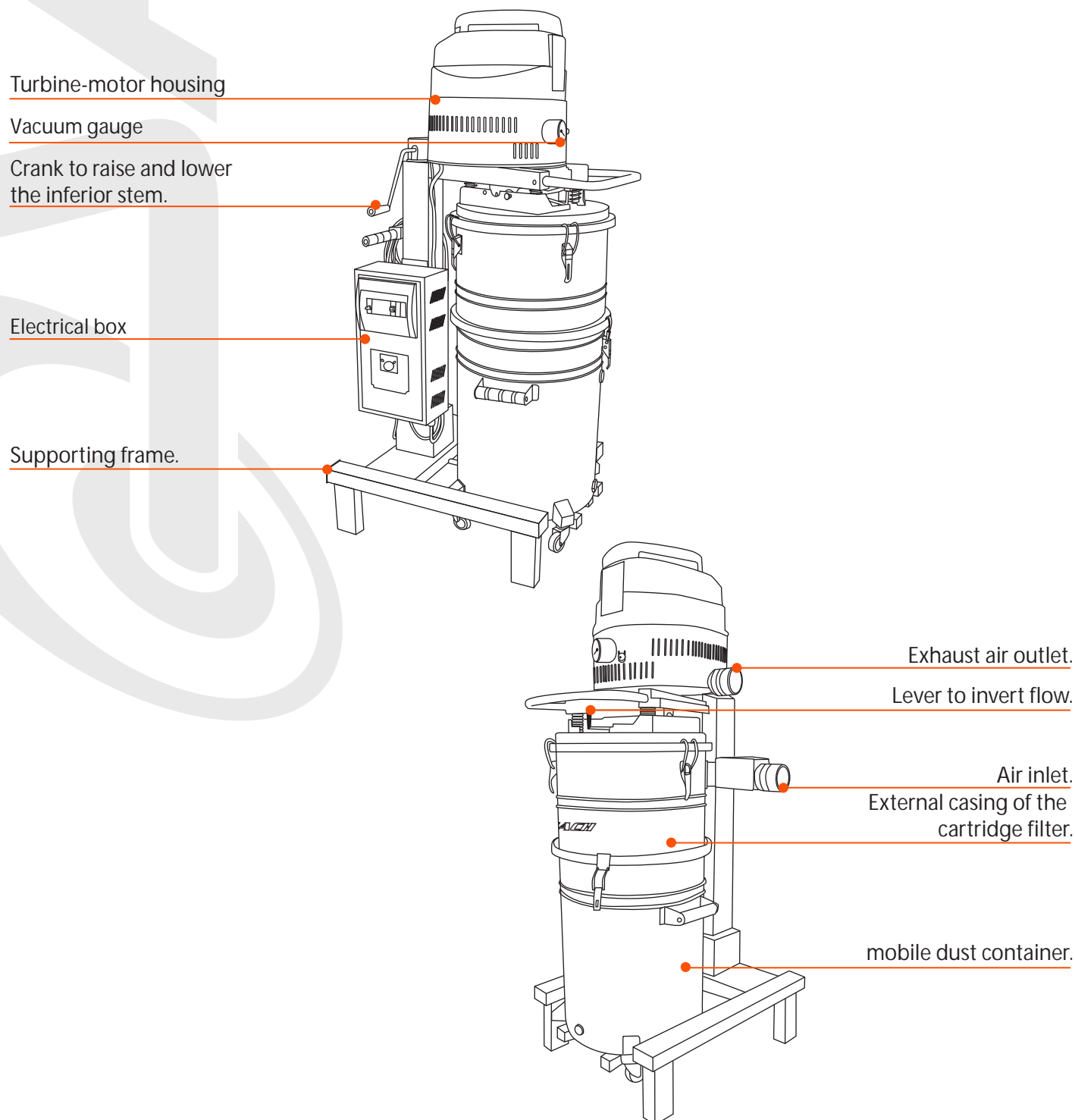
TECHNICAL SPECIFICATION PLATE - CHARACTERISTICS

Each SACH central vacuum comes with a plate showing all relevant details to assist the manufacturer / supplier to provide instructions, suggestions and replacement parts.

The technical details contained on the plate are as follows:

- Manufacturer.
- Model.
- Power supply.
- Motor power.
- CE mark.

MAIN COMPONENTS OF THE EVO BLOCK MODEL



SAFETY FEATURES

The central vacuum unit has been manufactured in accordance with the mandatory norms applying to user safety.

Each metallic component is earthed to avoid it accidentally becoming live or exposed to electrostatic currents. Similarly, by using a flexible hose suitable for vacuuming there is no risk of a shock being transmitted from the inlet valve over the length of the hose to the user. Before switching on the central vacuum unit, verify that there has been no damage caused to the unit in transit that might prevent the correct functioning of the appliance.

7. INSTALLATION

TRANSPORTATION AND DELIVERY

- Each central vacuum unit has been thoroughly inspected before delivery to the shipper.
- The central vacuum unit was securely fixed to a pallet and wrapped in protective cardboard.
- Once the goods have been received check that all the parts are intact and have not been damaged in transit.
- In the event of damage being identified, a claim should be lodged with the forwarder.
- The manufacturer accepts no liability for damaged or broken parts resulting from negligent transportation.
- The lifting and the moving of the central vacuum unit must be carried out by means of a forklift truck paying due consideration to the applicable norms concerning health and safety in the workplace.

INSTALLATION OF THE CENTRAL VACUUM UNIT

1. VERIFICATION OF THE CORRECT ELECTRICAL CONNECTIONS

Connect the industrial plug to a socket of the same amperage and protected by a network isolator. Before operating it is necessary to verify that the three-phase motor rotates clockwise as specified by the die-cast indicator located on the motor housing.

Should the motor rotate anti-clockwise, disconnect the central vacuum from the electrical network from the electric net, switch two of the cables inside the plug and repeat the process described above.

2. ACCESSORIES

It is possible to acquire accessories for the central vacuum unit which are not part of the standard kit supplied. The correct flexible hose should be chosen which best suits the materials to be vacuumed.

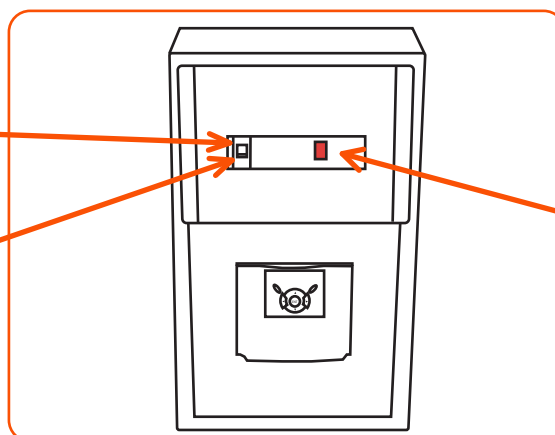
The central vacuum unit is now ready to be used.

8. USE OF THE CENTRAL VACUUM

8.1 SWITCHING THE CENTRAL VACUUM UNIT ON AND OFF

To switch on the central vacuum unit press the ON button

To switch off the central vacuum unit press the OFF button



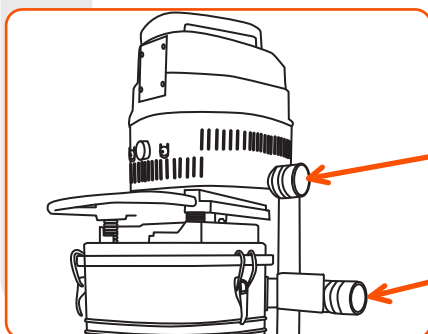
The red light means that the unit is powered

8.2 STARTING THE CENTRAL VACUUM

This chapter describes the procedures to follow for the correct operation of the central vacuum unit and the accumulation of dirt inside the dust container.

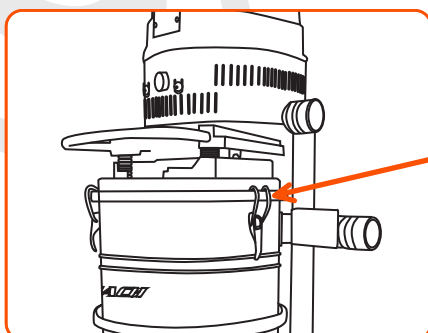
PRELIMINARY PROCEDURES.

Make sure that the central vacuum unit is disconnected from the electric supply. After positioning the central vacuum in a suitable place, carry out the following operations before switching it on.

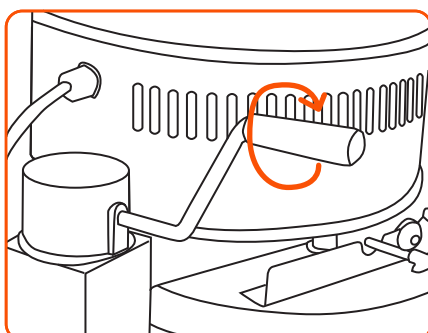


Connect the vacuum line from the valves with the tangential inlet on the filter compartment.

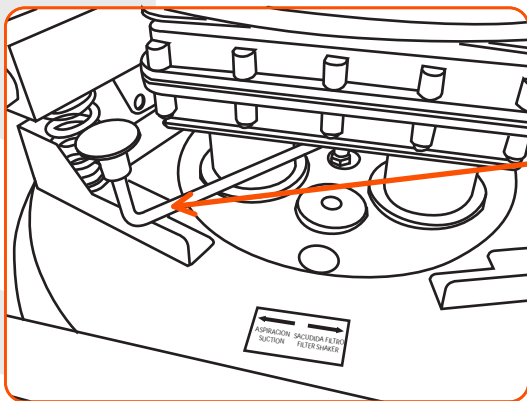
Connect the air exhaust line to the outlet located on the side of the motor housing.



Make sure that the main stem is fixed to the filtration chamber by means of the clamps which are indicated in the illustration.



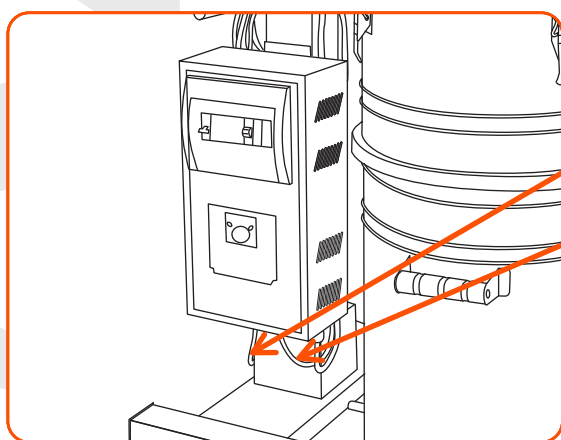
Raise up the dust container turning the crank that is located on the back of the central vacuum unit. Make sure the dust container is in contact with the main body tightened



Make sure that the lever for the flow inversion which is indicated by the arrow is completely located to the left side.

9. ELECTRICAL CONNECTIONS

The panel shown in the illustration is equipped to start the central vacuum by picking up a signal coming from the inlet valves. Moreover, it facilitates maintenance and filter cleaning, as explained in Chapter "Emptying the dust container".



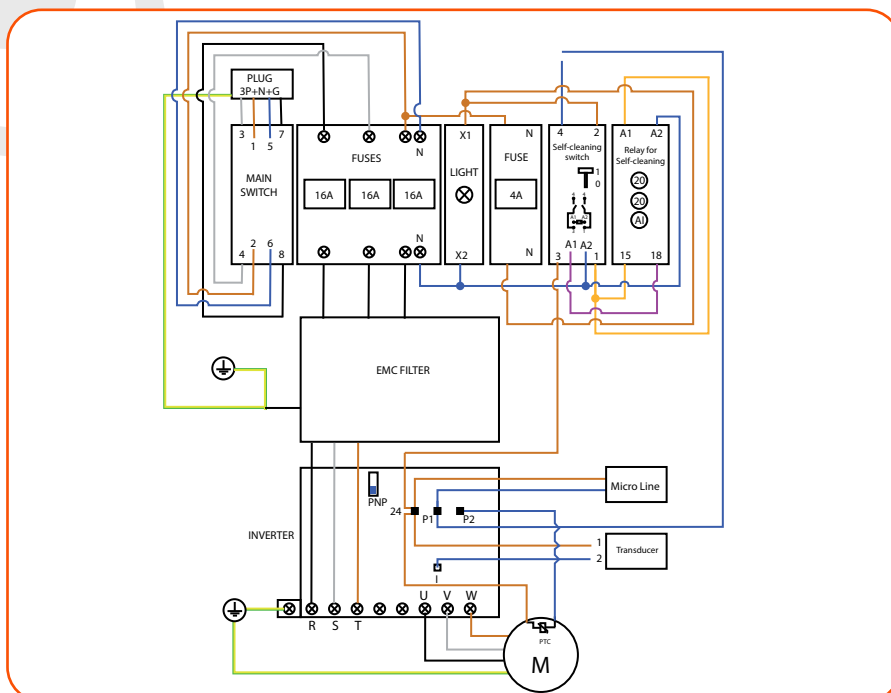
Cable connection to the inlet valves.

Cable connection to the electrical supply fitted with an approved plug.



IN CASE OF EMERGENCY DEPRESS THE RED BUTTON TO STOP THE CENTRAL VACUUM UNIT IMMEDIATELY. ALWAYS FOLLOW CAREFULLY THE FILTER CLEANING AND MAINTENANCE PROCEDURES DESCRIBED ABOVE. DO NOT INTERRUPT OR ALTER IN ANY WAY THE FIXED DURATION OF THE FILTER AGITATION. DURING NORMAL USAGE IT IS RECOMMENDED TO AVOID ACTIVATING THE AIR-FLOW INVERSION.

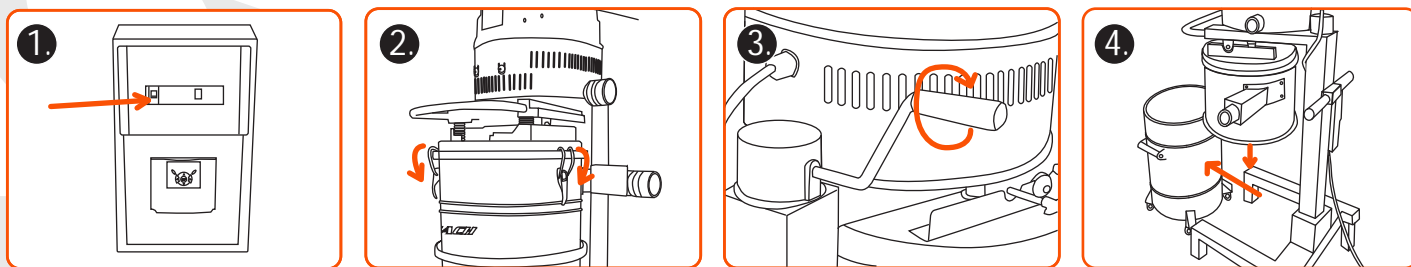
WIRING DIAGRAM FOR INVERTER TO EVOBLOCK 3kW AND 5.5kW WITH ELECTRONIC CONTROL



10. MAINTAINING THE CENTRAL VACUUM UNIT

10.1. EMPTYING THE DUST CONTAINER

IT IS RECOMMENDED THAT A MASK AND GLOVES ARE WORN FOR EMPTYING THE DUST CONTAINER AND CLEANING THE FILTER.



1. TURN OFF THE CENTRAL VACUUM UNIT.
2. UNHOOK THE CLAMPS WHICH CONNECT THE DUST CONTAINER TO THE FILTER COMPARTMENT.
3. LOWER THE DUST CONTAINER BY TURNING THE HANDLE TO RELEASE IT THEREBY ALLOWING IT TO BE MOVED.
4. UNFASTEN THE DUST CONTAINER IN ORDER TO BE ABLE TO REMOVE IT.

The dust can be captured either directly in the dust container or a polyethylene bin bag (not supplied) placed inside.

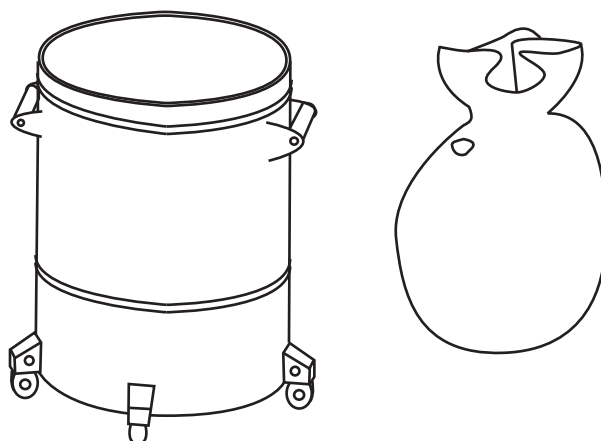
10.2. INSTALLATION OF A BAG INSIDE A DUST CONTAINER

To ensure the bag stays open, make a 2cm hole in the bag approximately 2-4cms away from the edge of the dust container.

Place the polyethylene bag in the dust container and fold its edges over the rim of the container ensuring a snug fit.

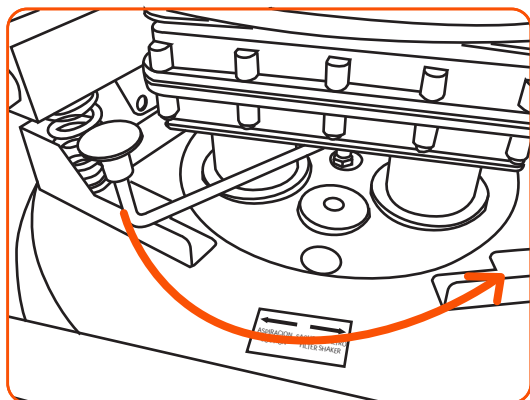
Close the dust container by repeating the steps described above.

To move the bin back into place follow the instructions provided above.



10.3. THE FILTER'S SELF-CLEANING SYSTEM (FILTER AGITATION FEATURE)

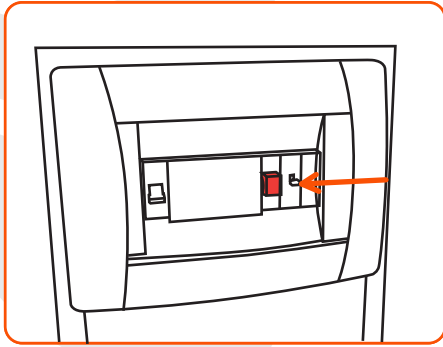
The purpose of this feature is to keep the filter in perfect working order thereby ensuring it performs efficiently and extending its life.



ATTENTION!

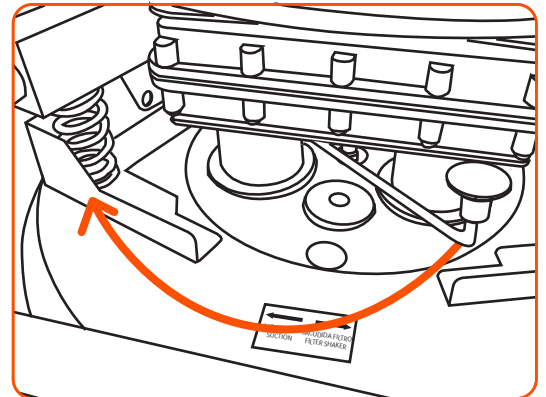
Make sure that the central vacuum is not operating or that no user is connected to it.

To activate flow inversion put the handle as to the right as possible as is indicated by the arrow.



Start the machine by pressing the button as shown in the illustration. The unit starts and continues to run for about 20 seconds, in accordance with its factory setting.

Return the unit to its original operating mode by ensuring that the flow inversion handle indicated by the arrow is put on the left completely.



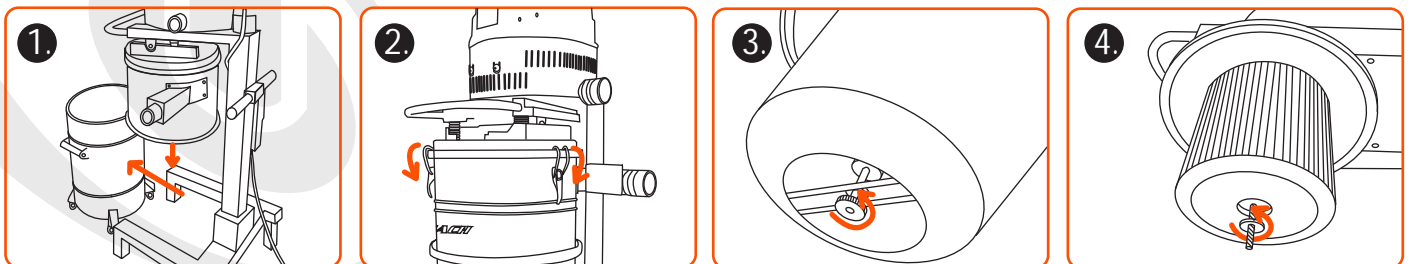
During the pre-programmed cleaning operation described above the central vacuum will not run and it is consequently not possible to vacuum using the inlet valves during this time.

By following the procedures laid out in the previous chapters there exists no danger to the operator.

10.4 REPLACING THE FILTER

After at most 100 hours of operating the system check the condition of the filter. IT SHOULD BE FREE FROM HOLES OR CUTS. In the event of damage being identified the filter needs to be replaced in accordance with the following instructions:

IT IS RECOMMENDED THAT A MASK AND GLOVES ARE WORN FOR EMPTYING THE DUST CONTAINER AND CLEANING THE FILTER.



1. Turn off the central vacuum unit and unplug it. Remove the dust container as shown in the previous chapter by rotating the handle.

2. Unfasten the filter housing by releasing the clamps which secure it as indicated in the illustration below.

3. Remove the metal filter cover by unscrewing the knob which holds it in place. Now the filter is accessible.

4. Remove the filter it by unscrewing the knob indicated in the illustration and replace it with a new one. Dispose of the used filter in compliance with the appropriate norms in force regarding disposal. Reassemble the filter unit by following the procedure already described only in reverse.

10.5 PERIODIC MAINTENANCE

BEFORE SWITCHING THE UNIT ON EACH DAY

- Check the condition of the electrical power cable. (It must not be twisted, kinked or split.)
- Check that the electrical control switch is functioning properly.
- Verify the amount of dirt in the dust container.
- Check the condition of the low-voltage hose and that it's working properly.
- Check that the motor head is correctly located on the filter compartment and that the filter compartment is correctly lined up with the dust container.
- Should the central vacuum unit be moved, verify that the new electrical power supply is the same as that specified on the unit's technical specification plate.

AFTER EVERY 100 HOURS OF OPERATION

- Check the condition of the filter compartment. There should be no holes or splits in it. Should damage to the filter be identified follow the instructions in the section on FILTER REPLACEMENT.
- Verify that all the components are in good working order and that the original factory settings are still in force.

11. TECHNICAL DATA

MODEL		EVOBLOCK 3.0KW THREE-PHASE	EVOBLOCK 5.5KW THREE-PHASE
REFERENCE		ST3290.2-SC	ST3290.4-SC
CONTROL TYPE		ELECTRONIC	ELECTRONIC
OPERATORS	Nº	2	3
INLET VALVES	Nº	<70	<90
DUST CONTAINER CAPACITY	L	100	70
FILTER SURFACE AREA	M²	1.3	2.4

		EVOBLOCK 3.0KW THREE-PHASE	EVOBLOCK 5.5KW THREE-PHASE
PRODUCT CODE		ST3290.2-SC	ST3290.3-SC
OPERATORS	Nº	2	3
POWER SUPPLY	V/Hz	380/50-60	380/50-60
NOMINAL ABSORBED POWER	kW	3/3.60	5.5/6.6
MOTOR REVOLUTIONS	rpm	3500	3500
PROGRESSIVE STAR-UP		YES	YES
MAX. VACUUM	MM H ₂ O	3100	3100
MAX. AIR CAPACITY	M³/H	380	560
INVERTER		YES	YES
NOISE LEVEL	dB	<70	<70

12. EEC CONFORMITY

SACH, S.L.

C/ Vereda de los Barros, 67 Nave A-B

Pol. Ind. Ventorro del Cano,

28925 – Madrid – Spain.

declares on its own responsibility, that the central vacuum unit types:

- EVOBLOCK THREE-PHASE 3kW ELECTRONIC CONTROL
- EVOBLOCK THREE-PHASE 5.5kW ELECTRONIC CONTROL

Meet the requirements of the following directives and laws:

CENTRAL VACUUMS DIRECTIVES

2006/42/EC

DIRECTIVES ON LOW-VOLTAGE ELECTRICAL SUPPLY

2006/95/EC

DIRECTIVES ON ELECTROMAGNETIC COMPATIBILITY

2004/108/EC

Meet the requirements of the following norms:

IEC 60335-1/2004

IEC 6033-2-69/2005

IEC 62233/2005

EN 55014-1/2000+A1/2001+A2/2002

EN 55014-2/1997+A1/2001

EN 61000-3-2/2000

EN 61000-3-3/1995+A1/2001

EN 61000-3-11/2000+A1/2001

This declaration loses validity should the central vacuum unit be modified in any way.

Madrid,

SACH, S.L.



Alexander García Vila,
Managing Director

www.sachvac.com



CENTRAL VACUUM SYSTEMS

C/VEREDA DE LOS BARROS,67 NAVE A-B
POL.IND.VENTORRO DEL CANO
28925-ALCORCON-MADRID-SPAIN
TEL.+34 91 633 34 93
FAX.+34 91 633 49 31